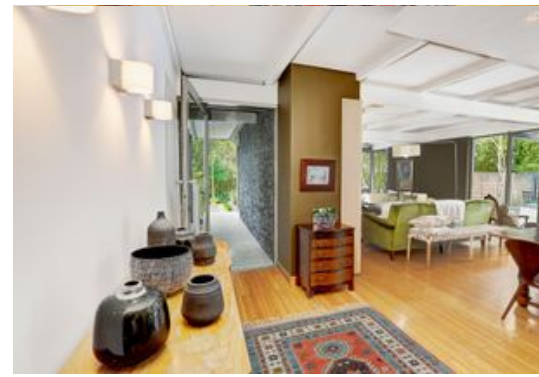




Web Ref: RL12568

AFRICAN PROPERTY AWARDS
AWARD WINNER
LAUFEN
2022-2023

AFRICAN PROPERTY AWARDS
AWARD WINNER
REAL ESTATE AGENCY
SINGLE OFFICE
SOUTH AFRICA
Rustenburg International
2019-2020



House For Sale Valmary Park

17 Helderberg Road

R10,990,000

5 5 2

Interior

Floor Size 460m²
Bedrooms 5
Bathrooms 5
Reception Rooms 3

Rates: R2,088 PM

Exterior

ERF Size 1,734m²
Security Yes
Pool Yes
Pet Friendly Yes
Flatlet 1

A Forest in the Suburbs

"A forest in the suburbs" aptly describes the lifestyle exuberated by this architect designed property. Located in the heart of Valmary Park this mid-century pavilion-style home with its sleek lines offers a contrast to the busy city life outside. This home, featured in the DIGEST OF SOUTH AFRICAN ARCHITECTURE, boasts steel, aluminium, gabion structures and solid wooden beams with large sliding doors and shutters seamlessly integrating with the forest-like garden.

The waterwise garden filled with lush established trees and leafy shrubs has been meticulously landscaped offering clean lines and defined spaces whilst not once losing the forest style.

Set amidst the forest-like garden you will find a three bedroomed pavilion overlooking a large two bedroomed pavilion offering accommodation fulfilling most property buyers' needs.

Disclaimer: Although all details are believed to be correct, we cannot guarantee the validity of the information here.



Scan QR
code for
more details

REALTORS
GROUP



Manja Kritzinger
Principal & Director

082 566 2974
021 9755720
manja@realtorsgroup.co.za



Rumé Weeks
Property Practitioner

072 915 4764
021 9755720
rume@realtorsgroup.co.za